



شركة مركز المعادن الصناعية و.م.م.

**INDS. METAL CENTER CO. W.L.L.**

**39**  
YEARS

AND  
**WE STILL**  
**KEEP**  
**INNOVATING...**



QUALITY AWARD  
SPAIN 1997



AL - RAI, AL GHAZALI ST. OPPOSITE CENTRE POINT  
P.O. Box: 42018 SHUWAIKH, 70651 KUWAIT  
TEL: OFFICE / SHOWROOM: (965) 24748903 / 5 / 7  
FAX: (965) 24748909 E-MAIL: IMCCK@IMCCK.COM

WEBSITE: [WWW.IMCCK.COM](http://WWW.IMCCK.COM)

# COMPANY PROFILE

## A. OWNERSHIP

- 1) Mr. Bader Hamood Al-Rodan
- 2) Mr. Giragos (Garo) N. Kuyumjian  
Partnership Company with Limited Liability.

**B. REGISTERED CAPITAL: KD 3,000,000**  
**WORKING CAPITAL : KD 4,000,000**

**C. Facilities : 8850sqm Covered Factory Floor**  
**& 7090sqm Open & Shaded Warehouses**

**D. ESTABLISHMENT : 1974**

## E. BANKERS

- a) National Bank of Kuwait-Main
- b) Industrial Bank of Kuwait
- c) Gulf Bank
- d) Commercial Bank of Kuwait-Main
- e) Burgan Bank-Main

**Metal Center has four major divisions catering to the activities of the company:**

- 1) Architectural Metal Works
- 2) Shutters & Doors
- 3) CNC Cutting Service Center
- 4) Metal Trading & Stockholder

## F. Commercial Office

21/23 Sts. Shuwaikh 70651 Kuwait  
Tel Nos.: (965) 2484 2503/05  
(965) 2481 2505  
Fax No.: (965) 2481 9470

## G. AL-RAI MAIN OFFICE & SHOWROOM

Along Ghazali Road, Al-Rai Industrial Area  
(Opposite Centerpoint)  
Tel Nos.: (965) 2474 8903 / 5 / 7  
Fax No.: (965) 2474 8909

**Architectural / Ornamental / Structural Installations and Decorative Fabrication Metal Works.**

**Manufacture & Installation of Rolling Shutters, Overhead Doors, Hollow and Fire-Rated, Blast Proof & Overhead Sectional Grill Doors & Roof Hatcher.**

**Pre-Fabricated Houses, Space Frames Standing Seam Roofing Contracts.**

**Gates Automation Systems and Equipments**

**Specialist Traders and Stocklist of Semi-Finished Ferrous and Non-Ferrous Metal and Products.**



Mr. Giragos N. Kuyumjian  
Managing Director  
and Mr. Bader Al-Rodan  
Partner of the Company  
receiving the Prize.

FOUNDED IN 1974  
METAL CENTER IS A  
GROWING COMPANY  
NOTED FOR DIVERSE ACTIVITIES.

شركة مركز المعادن (الصناعية) ذ.م.م.  
**INDS. METAL CENTER CO. W.L.L.**

**WORLD QUALITY  
COMMITMENT AWARD**



SPAIN 1997



# FABRICATION DIVISION DOORS

The fabrications activities and other manufacturing operations of Metal Center is centered on its sprawling Metal Center Factory in Subhan & Amghara, With a working covered area of 7700 sqm. It is well - equipped with machinery of latest technology in the manufacture , fabrication and installation of brass & bronze, stainless steel, wrought iron and acrylic ( plexiglass ) and other specialized metal fabrications including various equipment for all kinds of plating processes and fire-rated, rolling overhead sectional and steel doors.

## ARCHITECTURAL & ORNAMENTAL INSTALLATION, STEEL STRUCTURE & DECORATIVE METAL WORKS

### CAPABILITIES OF THE COMPANY

Metal Center are Working in two Different Factories Locations:

- 1) Subhan Industrial Area = 2000sqm
- 2) Amghara Industrial Area = 6100sqm

Including various CNC, CN and Conventional Machineries & tools equipped with highly engineers capabilities in terms of Electronic & Human capabilities.

Supported with other branches of the company eg Lazer, Waterjet Cutting Services also the Metal Trade and Stockholding Department it will be in unique solution to take high value and volume metal work commitments, this department is known in its precious neat workmanship and committing habit.

Metal Center is synonymous to quality fabrication and installations of handrails, balusters (with or without glass), shop-fronts, cladding works. Either in stainless steel, brass & bronze, wrought iron, acrylic , etc. our work are ideally manufactured for private villas or residences , hotels or shopping malls. Along this line.

Metal Center has pioneered in Kuwait the high-quality spiral full glass railing. With a commitment to sustain quality production, Metal Center imported advanced machinery to implement its expertise in architectural & ornamental metal works.

High-tech machinery are used at the Metal Center Factory to achieve the finest touches in metal works while it maintains regular contact with major suppliers of materials in this activity. The Company, therefore has to invest huge amount in order to develop and completely succeed on this fields.

The capabilities of Metal Center are deep-rooted in its commitment to serve clients and customers with technical expertise and world -class experience.

The same commitment had likewise encouraged Metal Center to work even harder.

For superior finishing and polishing and / or maintenance of stainless steel, brass or copper, or other specialized metal works and fabrications, Metal Center also imports, mostly from UK , Germany and Europe , sanitizing wheels , composition ,etc.. A special arrangement for stoving lacquer has been committed with an associate from UK.

Metal Center is now equipped with three (3) worlds finest and highly - specialized machines worth KD 400,000 to enhance quality or to exploit more of the capabilities of the Company.



Highly - qualified and most-experienced sales and administrative staff to assist in all related enquiries for our esteemed clients and other patrons.



Well - trained mechanical and metallurgical engineers, architects , designers , fabricators and technicians for fabrications, installations and maintenance of all products.



▲ METAL CENTER FACTORY PERSONNEL AND STAFF

39 YEARS AND WE STILL KEEP INNOVATING...



# FACTORIES AND MACHINERIES

## Our Factories at Amghara Industrial Area



Shutters & Doors Architectural Metal Fabrication  
6100 sqm Total Working Space.

Computer Numeric Control (CNC) machining is a manufacturing process that automatically shapes or forms metals or other materials into highly precise parts.



CNC Process in brief:



With 4,800 total space area covered concrete up to date and facilities with basement, ground floor and mezzanine floors with 2 overhead crane machines, loading and unloading facilities area. It is equipped with (Japan) machines promecun, sheet metal machineries and welding painting facilities for large and work pieces.



AMADA Promecan CNC Machines (Japan) ▲



▲ Practica & Ultima Machines (Belgium)

39  
YEARS AND  
WE STILL  
KEEP  
INNOVATING...



# FACTORIES AND MACHINERIES

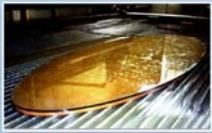


WATERJET AND LASER CUTTING  
SERVICE CENTER  
Shuwaikh Industrial Area

## Waterjet CUTTING

Ideals for cutting materials such as:

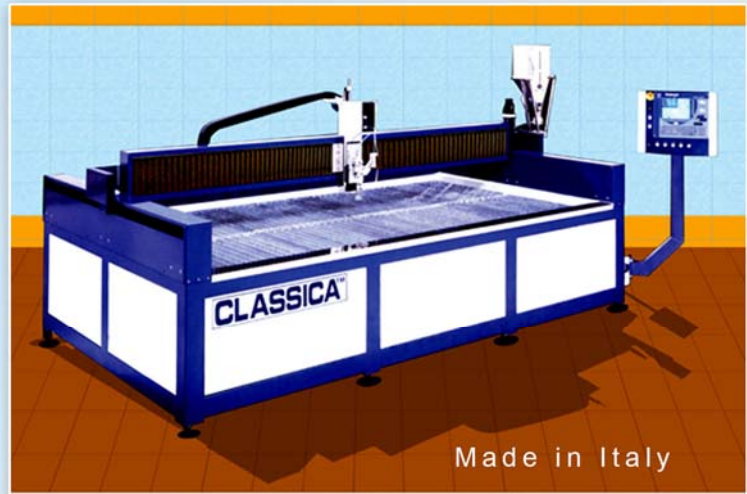
Stainless Steel, Mild Steel, Aluminium  
Glass, Ceramic, Natural Stone,  
Brass, Copper, Titanium  
and many more...



Glass



Ceramic



Made in Italy

WATERJET MACHINE ▲

## Laser CUTTING



Made in Italy

LASER MACHINE ▲



Ideals for cutting  
materials such as:

Stainless Steel,  
Mild Steel,  
Ballistic/Armored Steel,  
Super Alloy  
Titanium and many more...



Armored Steel

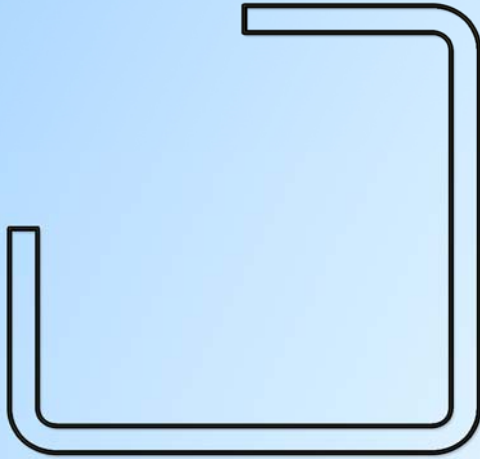


Titanium

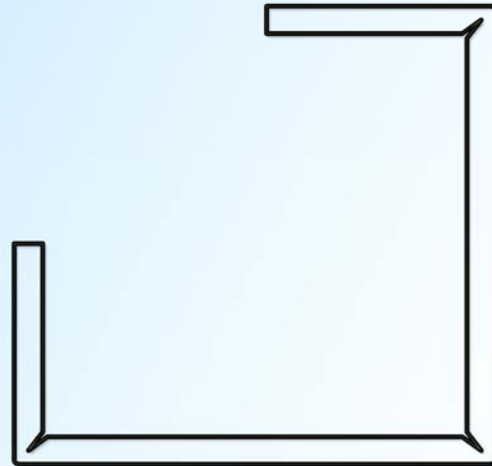
39 YEARS AND WE STILL KEEP INNOVATING...

# FIRST & ONLY CNC "V" GROOVING MACHINE IN KUWAIT

IMCC is pleased to announce that we successfully introduced the improvised sharp corner profiles using our latest addition to our CNC machinery the first and only state of the art sheet metal "V" grooving machine in Kuwait. With this advanced technology, together with our CNC laser cutting machine we are able to produce steel, stainless steel, brass, titanium special profiles with sharp angle corners (min. reduce) as opposed to the traditional radius/round angle corners as illustrated in diagrams below.



Traditional Radius Corner Profile



Sharp Corners Profile

This special feature enables us to deliver esteemed architects the sharp corners they have always wanted to see on their metal products such as stainless steel, glazed doorsets, column claddings, canopies, shop fronts, etc... including colored stainless steel sheets (without color distortion) while bending.



We use same machinery which made these luxury entrance metal work



39 AND WE STILL  
YEARS KEEP INNOVATING...



# ARCHITECTURAL & ORNAMENTAL INSTALLATION STEEL STRUCTURE & DECORATIVE METAL WORKS

## Previous Experience...



**KUWAIT HILTON RESORT HOTEL**  
Stainless Steel Railings & other  
Stainless Steel Works



**KUWAIT UNIVERSITY**  
Stainless Steel Railings &  
other Stainless Steel Works.  
College of Adm. Studies,  
Shuwaikh Campus  
Admin. & Library Bldg.  
Khaldiya Campus,  
Health Sciences Center  
Jabriya Campus



**Kuwait Insurance Co.**  
Brass Handrails



**KUWAIT OIL COMPANY**  
Brass Railings & other  
Specialized Works

**BAIT AWLADONA**  
Stainless Steel Railing

**KUWAIT CHAMBER OF  
COMMERCE & INDUSTRY**  
Miscellaneous Architectural Metal  
Works (Stainless Steel Screen  
Frames, Stainless Steel Entrance  
Cladding, Stainless Steel / Glass  
Doors, Auditorium Stainless Steel  
Cladding Portal Door)

**SOCIAL SECURITY CENTER**  
Sulaibikhat-Stainless Steel /  
Glass Railing, Completed.

**KUWAIT INTERNATIONAL AIRPORT**  
Stainless Steel Wall Mounted  
Railing.



**GULF INVESTMENT HOUSE**  
Stainless Steel Tables, Partition  
& Seat Cladding

**BADER MULLA Bros.**  
Chrysler & Mitsubishi  
Cars Showroom  
Stainless Steel / Glass Railings

**KUWAIT CHAMBER  
OF COMMERCE  
& INDUSTRY**  
Miscellaneous Architec -  
tural Metal Works,  
Stainless Steel Screen  
Frames , Stainless Steel  
Entrance Cladding  
Stainless Steel,  
Glass Doors  
Auditorium Stainless  
Steel Cladding ,  
Portal Door

**39**  
YEARS  
AND  
WE STILL  
KEEP  
INNOVATING...



# ARCHITECTURAL & ORNAMENTAL INSTALLATION STEEL STRUCTURE & DECORATIVE METAL WORKS

## Other Prestigious Projects...

### AL-AWQAF TOWERS

Stainless Steel Column Cladding  
& other Stainless Steel Works

### AL-SHARQ WATERFRONT PROJECT

Internal Finishes & other Metal Works

### AL-SHAYA COMMERCIAL COMPLEX

Brass Handrails

### AL-SHAMIYA & SHUWAIKH

COOPERATIVE SOCIETY PROJECT

### SALMIYA-FANAR COMMERCIAL CENTER

Ornamental Metal Works, Stainless Steel Balusters with Decorative Glass Panels, Painted Handrails and Specialized Watch Turret.

### FASHION WAY DEPARTMENT STORE

Ornamental Metal Works

### MILANO SHOWROOM

Ornamental Metal Works  
Stainless Steel Railing Works



Milano Showroom ▼

▲ 360° Mall Metal Works



Burgan Bank ▼



### SHARQ MARKET

Brass Signage  
and Railings ▼

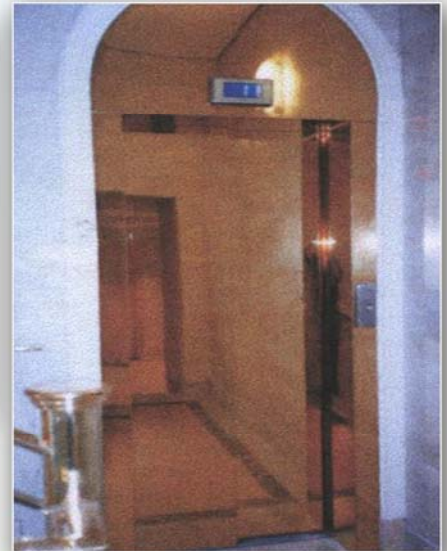


### BADER AL-MULLA & Bros ▲

Chrysler Car Showroom  
Floor & Wall Mounted Handrails



Kuwait Insurance Co  
New HQ Bldg. ▶



AL-AWQAF TOWER Column Cladding ▲



SHAMIYA & SHUWAIKH  
Cooperative Society Project ▲

39 YEARS AND WE STILL KEEP INNOVATING...





# ARCHITECTURAL & ORNAMENTAL INSTALLATION STEEL STRUCTURE & DECORATIVE METAL WORKS

## Other Experience...

MINISTER OF DEFENCE RESIDENCE  
Sheikh Ahmad Al-Hmud  
Ornamental Metal Works  
Brass Handrail / Spiral Type

BAYAN PALACE CONFERENCE BLDG.  
REHABILITATION  
Ornamental Metal Works, Galvanized / Stainless  
Steel / Brass Railings & Strips

BAYAN PALACE PHASE II  
Hand Landscape & Infrastructure - Ornamental  
Metal Works, Stainless Steel Railings, Structural  
Tubes, Steel Gates and Fences.

BAYAN PALACE ▼



BURGER KING ▼



BAYAN PALACE Spiral Staircase Railings ▲

MERCEDES BENZ SHOWROOM ▲



THE BAYAN PALACE HANDOVER



MR. GIRAGOS N. KUYUMJIAN (LEFT)  
MANAGING DIRECTOR IMCC AND  
ENGINEER NASER AL MASMOOM (ABOVE RIGHT) ▲  
MINISTRY OF PUBLIC WORKS SIGNING THE CONTRACT.



39 AND WE STILL  
YEARS KEEP  
INNOVATING...



# ARCHITECTURAL & ORNAMENTAL INSTALLATION STEEL STRUCTURE & DECORATIVE METAL WORKS

Recently accomplished project.....



## The Avenues



Architectural Decorative Light ▲



Panoramic Elevator ▲

▼ Stainless Steel Cladding



Glass Bridges ▲



▲ Glass Balustrades



Rolling Shutter & Grilles ▲

39 YEARS AND WE STILL KEEP INNOVATING...

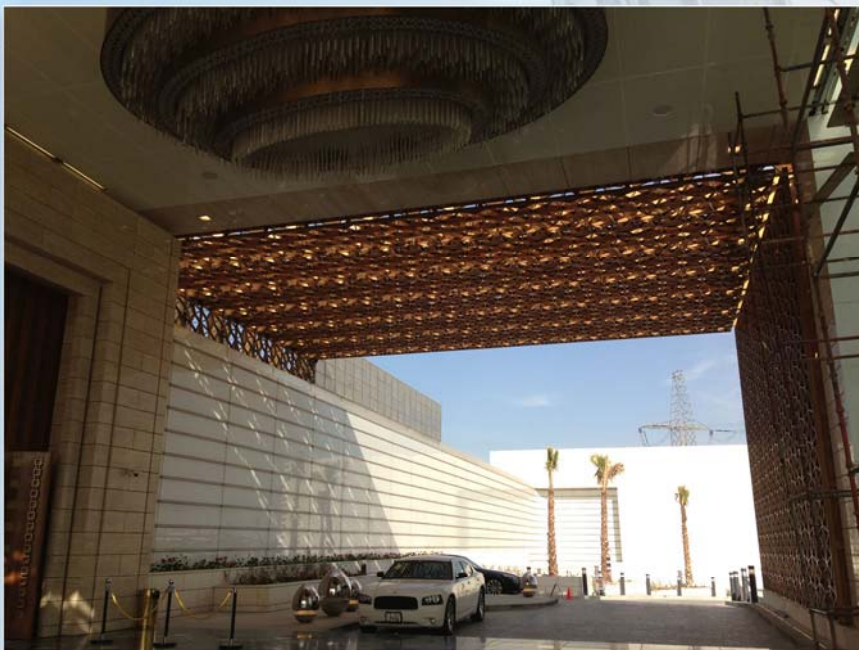
9



# The Avenues

Recently accomplished project.....  
at the Grand Avenues

Special Decorative Display ▼



▲ Bronze Cladding

39 AND WE STILL  
YEARS KEEP  
KEEP INNOVATING...

10

# 360° MALL



Wood / Stainless / Glass Balustrades ▲



Stainless / Glass Balustrades ▼

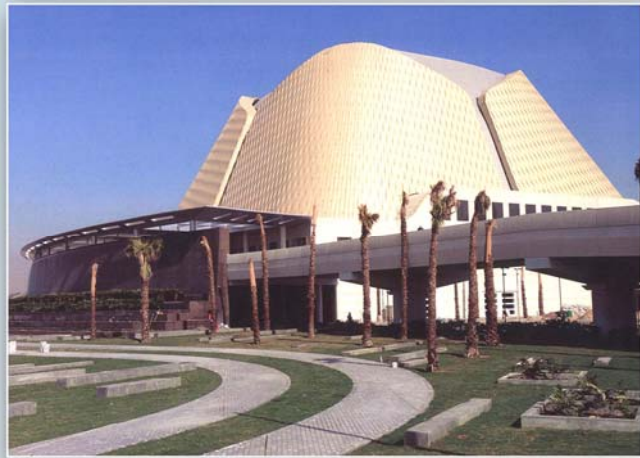


Cladding Work ▲



Stainless / Glass Balustrades ▲

# Super Deluxe Architectural Metal Doors AMIRI TERMINAL AIRPORT



**30 Minutes Fire Rated Stainless Steel Fully Glazed Door Sets**  
**Tested at Exova Warrington fire - UK**  
**CERTIFIRE Approved**  
**Kuwait Fire Service Directorate Approved**



UNITED TOWER = 450 NOS.



SHERATON -FOUR POINTS = 38 NOS.



AL HAMRA TOWER = 122 NOS.



GLOBAL TOWER = 22 NOS.

# ARCHITECTURAL & ORNAMENTAL INSTALLATION STEEL STRUCTURE & DECORATIVE METAL WORKS

## Recent Contracts...

**UNITED TOWER** - Stainless Steel-Fire & Non Fire - Rated Doors / Glazed Panels, through M/s: Al-Sadeer Trading Contracting Co. W.I.I.

**AL-HAMRA TOWER** - Stainless Steel- Fire & Non Fire-Rated Doors / Glazed Panels, through M/s: Ahmadiyah Co

**AMIRI TERMINAL** - Architectural Metal Doors, Stainless Steel, Architectural Fitting & Metal / Glass Works.

**KHARAFI VILLA PROJECT** - Three Super De luxe for Kharafi at Beda A

**SYMPHONY COMPLEX** at Salmiya - Stainless Steel and Stainless Balustrades, Handrails, Ladders and Canopies through M/s: Sayed Behbehani & Sons Co.

**360 DEGREE KUWAIT** - Stainless Steel, Glass Balustrades, Handrails, Specialized Works through M/s: Ahmadiyah Co.

**BKME HEADQUARTERS** - Stainless Steel, Spiral Handrails, and Column Cladding through M/s: Mashael Co.

**AVENUES MALL PHASE I & II** - Panoramic Elevators, Glass Brigdes, Glass Balustrades, Stainless Steel and Stainless Handrails, Column Cladding and Canopies through M/s: Al-Ghanim International.

**MESSILAH HOTEL RESOLT** - Bronze Main Entrance Doors and Metal Fabrications through M/s: KCPC

**MR. KHALED AL-MESHAAN** - Private Villa at Qortoba Brass Domes and Weather Vanes, Stainless Steel and Stainless Balustrades, Handrails and Ladders through M/s: Al-Argan International

**AL-RAYA TOWER** - Stainless Steel Doors & Screens

**AL-HAMRA TOWER** - Stainless Steel Doors and Fences

**JAHARA TOWER** - Stainless Steel Doors

**COLLEGE OF BUSINESS STUDIES** - Stainless Steel, Railing and Crating etc.

And many prestigious projects at elite locations:

## Past Experiences....

- 1) Kuwait Aviation - Stainless Steel / Brass Column Cladding at Kuwait Airport, Arrival Hall: Stainless Steel Railing and Barriers
- 2) College of Administrative Studies - Kuwait University Campus - Brass / Stainless Steel, through M/s: International Contracting Group
- 3) Awqal Tower - Stainless Steel Cladding & Decoratiion, through M/s: M.A. Kharafi
- 4) Health Science Center - Stainless Steel & Steel Balustrades , Handrails & Ladders, through M/s: Al-Ghanim International Co
- 5) GIC Headquarters Building - Stainless Steel Doors, through M/s: Ahmadiyah Co
- 6) Kuwait Airport Arrival Hall -Stainless Steel Balustrades and Advertising Lighting Posts
- 7) Mr. Luai Khorafi Villa - Stainless Steel Railing
- 8) Dana Restaurant, Salmiya - Brass Railing
- 9) Mr. Bader Al-Bahar Qurtoba Villa - Stainless Steel and Brass Railings
- 10) Brass Railing at Ford Showroom, Shuwaikh
- 11) Acrylic and Brass Railings at Diwan Al-Mailam
- 12) Stainless Steel Railings at Rolls-Royce Showroom
- 13) New Al-Babtain Showroom at Al-Rai Stainless Steel Railings & Entrance Doors



▲ United Tower

Kuwait Airport



◀ Stainless Steel Column Cladding & Stainless Steel Railing at KUWAIT AIRPORT



Art Gallery ▲



▲ Al-Hamra Tower

## Our Signage Activities:

Fabrication & installation of all types of Plastic, Brass, Stainless Steel Signage, Signboard and Nameplate.. Also, Urban Signage, Engraving Works & Chemical Process Engraving, Large sizes are our specialty.

39 YEARS AND WE STILL KEEP INNOVATING...

14

# ROLLING DOOR SECTION

Another factory dedicated for our Doors Division is already operational. With a close of area 1300sqm, the Doors Factory in Amghara North caters mainly to the direct manufacture of B&D Roll - A - Door Rolling Shutters. Fire-Rated and Hollow Metals Doors. it is also addressed to the requirement of direct consumers especially in automation systems for sliding, swing and hinged doors and gates.

METAL CENTER is a Licensed Manufactures, Suppliers and Installers of:

- Manual, Electrically Operated and / or Remote-Controlled Roll-A-Door Rolling Doors and Shutter
- Manual & Motorized Sliding and Swing Gates (track-free and normal types)
- Gunther Tore Germany for Shutter Overhaed Door & Grill
- METAL CENTER Originally-Designed and Manufactured "NINO" and "HMUD" Fire-Resisting Doors, Tested for Fire-Resistance as per BS 476 part and were found to satisfy the requirements of British Standards of Fire Rating for 4 hours and 3 hours for NINO and HMUD, respectively, and were approved by the Kuwait Fire Dept. for same duration.
- Full Glass Stainless Steel LIFT LOBBY 60 minutes Double & Single Door with Side & Top Light

METAL CENTER is also:

Licensed Manufacturers of Roll-A-Door of M/s: B&D International Pty., Australia:

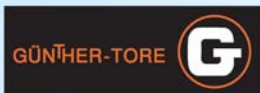
- Sole Selling Agents of:
- Fire Security & Archives Doors of M/s: Nykroppa Bruk, Sweden (Approved by Kuwait Fire Dept.)
- Automatic Gate Openers & Cross Barriers of M/s: CAME, FADINI from Italy & Electromaten Germany
- Ornamental Wrought Iron, Cast Iron and Cast Aluminium Decorative Articles for Fabrications of Ornamental Gates, Fences, Grilles, Partitions, Window Partitions and Handrails, etc. of M/s: RIK-FER snc (Italy)
- Gratings & Fences of M/s: Orsogril (Italy)

Local Representative of:

- M/s: Steel Craft, USA (Hollow Metal and Fire Doors)
- M/s: Bolton & Brady, Ltd., UK-for their entire range of products, ie. Fire Shutters, Sectional Doors, etc.
- M/s: Landert Motoren AG Switzerland for TORMAX Automatic Sliding and Swing Doors and Operators.



Made in Italy



Made in Germany



Made in Australia



Made in Italy

Overhead Rolling Doors For Residential and Commercial Application.

39 YEARS AND WE STILL KEEP INNOVATING...

15



# COMPANY DIVISION AND BRANCHES

- 1) Main office and Products Exhibition is around 400 Square Meters.  
Located at Al-Rai, Al- Ghazali Street in Front of Centerpoint (Administration Depart., Accounts Depart., HR Depart., Architectural and Doors Sales Activities).
- 2) Metals Store & Commercial Department is around 1500 Square Meters for Stock & Retail Sales of Ferrous & Non Ferrous Engineering & Decorative Metals.
  - a) Main Store in Shuwaikh behind of London Market closed to Stock & Retail Sales of Store with a Cut to Lenght Long Products Services & Overhead Crane Facilities.
  - b) Amghara Warehouse (1) is around 2500 Square Meters, Storages of Ferrous Metals Long Products up to diameter 900 mm, Flat, Square etc.. up to 300 x 1500 mm, Bushes and Variety of Oilfield and Industrial Carbon & Alloy Steels Materials.
  - c) Amghara Warehouse (2) is around 2500 Square Meters, Storages of Non Ferrous & Stainless Steel Material Long and Flat Products.  
Bronze, Brass, Stainless Steel Polymers Hollow & Solid Material up to Diameter 500 mm.
  - d) Retail Branches at Ahmadi is around 500 square meters & Shuwaikh is around 90 square meters for Ferrous and Non-Ferrous Long products.
- 3) Waterjet and Laser Cutting Services, Located at Shuwaikh is around 750 square meters.
  - a) Waterjet Cutting Machine Services is up to 150 mm Thickness, Metals, Stone, Glass and other Materials.
  - b) Laser Cutting 5000 W is up to 25.0 mm Thickness, Stainless Steel, Iron & other Materials.
- 4) Subhan Factory is around 2000 Square Meters Covered.  
Fabrication of Architectural Metal Works in Stainless Steel, Bronze, Brass, Wrought Iron and Acrylic materials.
- 5) Amghara Doors Factory (old) is around 1500 Square Meters.  
Fabrications & installations of Rolling Doors Roll Shutter, Overhead Sectional, Grill Doors, Fire Rated Service Doors, Roof Hatcher, Blast Proof Doors, Operation Control & Access Control Devices & Machinery.

- 6) Amghara Factory (new) is around 4600 square meters.  
Extension of our Old Amghara Factory with additional up to Highest Standard CNC AMADA Sheet Metal Cutting, Bending V Grooving, Forming Machine together with new arrival 4100 mm Long Sheet Metal Belgium CNC Machines and other Door Manufacturing Machinaries & Equipments eg, Foam Injection Machine, 5 layers Press and all related Machinaries & Equipments. Including Dussan Puma Automatic CNC Turning Center.

## UNDER ONE ROOF: ▶

Semi finished ferrous and non-ferrous metals for all engineering, oilfields, industrial and decorative applications available in the vast IMCC Shuwaik warehouse.



▲ Metal Stocks



▲ Copper



▲ Teflon



▲ Mega Cutting Machine



IMCC Associated / Partner with M/s: Folcra Spain  
Roofing, Cutain Walls & Structural & Architectural Metal Works

Commercial Division at Shuwaikh Industrial Area



39 AND WE STILL  
YEARS KEEP INNOVATING...

16

# COMMERCIAL DIVISION

## Metal Store & Warehouse

With a total land area of 2700sqm, the Metal Service Center is designed with updated storing facilities for KD 4,200,000 worth of stock, equipment and other accessories.

Stocks at Metal Store Shuwaikh Industrial Area ▼



BOHLER ▶



## STOCKS

METAL CENTER has at any given period, a stock of over 2400 tons of semi-finished ferrous and non-ferrous metal, Industrial plastics, teflon, acrylic, etc. These goods are for industrial, engineering, oilfield, petrochemical applications, heavy industries and decorative purposes.

Size Range, Bars Dia. 410-750mm, Sheet 0.60-38.0 mm, Tubes up to 900mm

### Non-Ferrous Semi-Finished Metals:

- Brass: bars, pipes, sheets, tubes, extrusions, etc.
- Copper: bars & sheets, tubes, etc.
- Bronze: bars, & hollow sections, etc.
- Aluminium: bars & sheets, etc.
- Perforated & Embossed Products

## Metal Tool & Wrought Iron Works Center

The Tool Center is engaged in the direct selling of different types of tools and equipment for various machinery, oilfield requirements, including welding electrodes.

Besides, The Center serves as distribution outlet for full range of pipes and pipe fitting & valves, for standard and non-standard requirements.

### Also available:

Laminated Sheet from DEKODUR Made in Germany

Aluminium Composite Panel from Leisville Made in Korea

Decorative Metal Bandings from Frank Morrow Made in USA

Decorative Metal Profiles from Profilpas Made in Italy

Stainless Steel Decorative Sheet

Stainless Steel & Brass Fittings



BRASS ▲



STEEL ▲



▲ Dekodur High Pressure Laminated Sheet

### Ferrous Semi-Finished Metals Carbon & Alloyed:

- Stainless Steel: sheets, pipes, tubes, flats, rectangular, rounds.
- Perforated, Etched TI Coated Sheets
- Tool Steel: sheets, pipes, tubes, flats, rectangular, rounds.
- Mild Steel: sheets, pipes, tubes, flats, rectangular, rounds.
- Alloy Steel: sheets, pipes, flats, rectangular, rounds.
- Silver Steel: bars, round, square, key bars.
- Black Steel: sheets, blocks, flats, rounds, slabs.

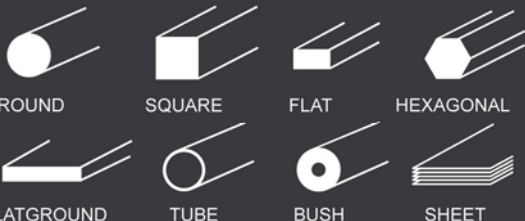
Carbon Steel: bars & hollow bushings

Cast Iron: bars & hollow bushings.

### Industrial Plastics

- Teflon: bars, hollows & sheets
- Polyamid: bars, hollow & sheets
- Acrylic: bars, sheets, tubes.
- Polycarbonate: single and double wall sheets.
- PVC Sheets

### MAIN SHAPES OF INDUSTRIAL METALS



Cut-to-length service up to 600mm dia. bars, tubes & pipes.

39 YEARS AND WESTILL KEEP INNOVATING...



# SHORT LIST OF MOST IMPORTANT CLIENTS

- Ministry of Public Work (MPW)
- Ministry of Defence
- Ministry of Planning
- Kuwait Airport
- Kuwait Oil Company
- Equate Petrochemical Company
- Petrochemical Industries Company
- Kuwait National Petroleum Company
- Kuwait Institute of Science Research
- Kuwait University
- Bayan Palace Phase I & II
- Ministry of Public Works
- 360 Degree Mall
- Al-Hamra Tower
- Ministry of Electricity & Water
- Civil Aviation
- All No. 1 Ranking Contracting & Construction Firms
- All Interior Finishing Establishments
- Consulting & Engineering Officers
- Other Public Authorities, Five-Star Hotels and Owners of Luxurious Homes, Villas, etc.
- Banks, Embassies, Refineries, Factories, Industries and Warehouse, etc.
- Avenues Mall Phase I, II & III
- Jahra Entertainment Center
- United Tower
- Ahmadia Trading & Contraction Company

## AFFILIATION IN PROFESSIONAL INSTITUTIONS

ASTM- American Society for Testing & Materials  
 BSI- British Standards Institution  
 AWS- American Welding Society  
 IDA (USA)- International Door Association



WEBSITE: [WWW.IMCGK.COM](http://WWW.IMCGK.COM)

18

# KEY PERSONNELS

Mr. Giragos (GARO) N. Kuyumjian  
Managing Director

AL- Rai, Main Office & Showroom  
Al - Ghazali St, (Opposite Centrepoint)  
Tel. No: (965) 2474 8903 / 5 / 7  
Fax No: (965) 2474 8909  
email: [imcck@imcck.com](mailto:imcck@imcck.com)

Mr. Nersis (Nerso) Kuyumjian - Ext. 108  
Business Development Manager  
email: [ngk@imcck.com](mailto:ngk@imcck.com)

Mr. Sayed Yousef - Employee Affairs - Ext. 110  
Mr. Ahmad Abd El Monem Marzouk - Legal/Employee Affairs - Ext. 112  
Madam Howida Ibrahim - Contract Coordinator - Ext. 106  
Mr. Hovik Jian - Liaison Officer  
Mr. Rino O. Villaluz - Executive Secretary - Ext. 109  
Mrs. Najma Khan - Showroom Receptionist & Secretary - Ext. 101  
Mr. Anil Kumar Anirudhan - Operations Manager

Estimation / Tender Department  
Eng. Asmaa Al Nahel  
Mr. Manu Madhavan

Accounting Department  
email: [accounts@imcck.com](mailto:accounts@imcck.com)

Mr. Jeral Jose - Finance Manager - Ext. 115  
Mr. Santhosh Mathew - Accountant - Ext. 114  
Mr. Butrus Saler - Accountant - Ext. 113

Sales Department:  
Stainless Steel & Metals Fabrication Works  
email: [projects@imcck.com](mailto:projects@imcck.com)

Eng. Mohsen Taher - Sales & Design Engineer - Ext. 103  
Mr. Romany W. Saadallah - Salesman - Ext. 102  
Mr. Jean Claude - Salesman - Ext. 117

Steel Doors & Rolling Shutters  
email: [doors@imcck.com](mailto:doors@imcck.com)

Mr. Ashod Kuyumjian - Division Manager - Ext. 104  
Eng. Omar Ali Faraj - Salesman - Ext. 116  
Mr. Shaukat Raza - Sales Coordinator - Ext. 107

Metal Store Commercial Division  
Tel No: (965) 2484 4534 / 2484 2505 / 2484 2403 / 2481 2502  
Fax No: (965) 2481 9470  
email: [metal@imcck.com](mailto:metal@imcck.com)

Mr. Garo Doushkounian - Commercial Manager  
Mr. Rolando Josol - Executive Secretary  
Mr. Lionel Padmasiri - Sales  
Mr. Abdul Khaliq - Sales

Ahmadi Store  
Tel Nos: 2398 7193 / 2398 7195  
Fax No: 2398 7198

Mr. Rafiqal Islam Moh. Zahur

SUBHAN FACTORY:  
Tel No: (965) 2471 1090 / 2471 8537  
Fax No: (965) 2476 4351  
email: [subhan@imcck.com](mailto:subhan@imcck.com)

Wrought Iron Fabrications & Metal Works  
Eng. Rajan Pannambalath - Factory Manager

Stainless Steel & Metals Fabrication Works  
Arch. Jojo Sibug - Project Manager

Drawings & Technical Department  
Eng. Eduardo Duran

Madam Achyamma Koshshy  
Secretary

Amghara Factory (Steel Doors & Rolling Shutters)  
Tel Nos: (965) 2455 0896 / 2455 0892  
Fax No: (965) 2455 0875  
email: [amghara@imcck.com](mailto:amghara@imcck.com)

Mr. Bassam Obied

MetalCo (WaterJet & Laser Cutting Service Center)  
Tel No: (965) 2481 4056  
Fax No: (965) 2481 4096  
email: [metalco@imcck.com](mailto:metalco@imcck.com)

Mr. Simon Panigian - Factory Manager  
Mr. Arthur Lilex - Architect

